



Cost-Effectiveness Analysis

Pilot Study

Christoph Katzer, M.Ed., M.A.

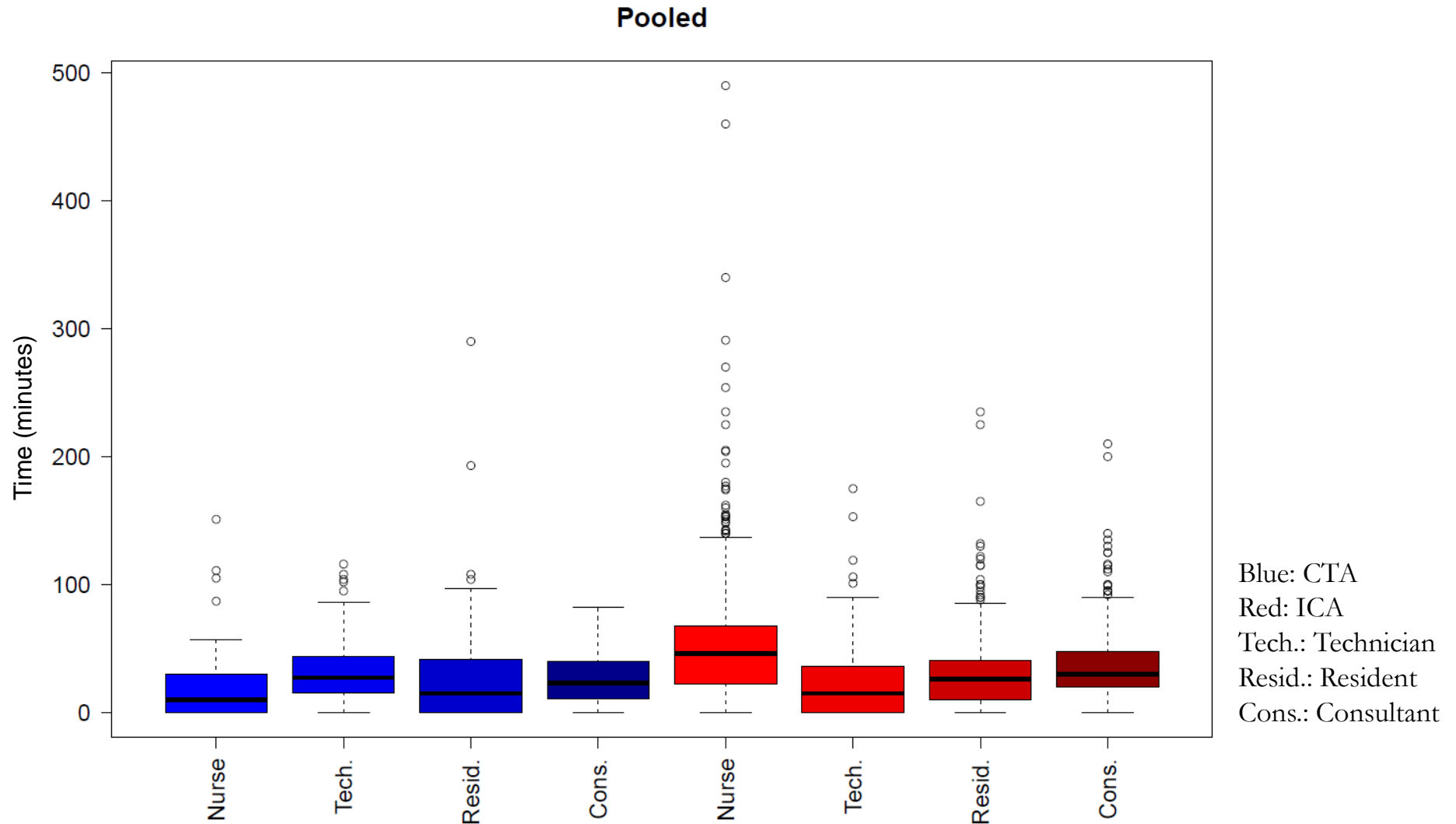
Department of Radiology



Description of Pilot Study

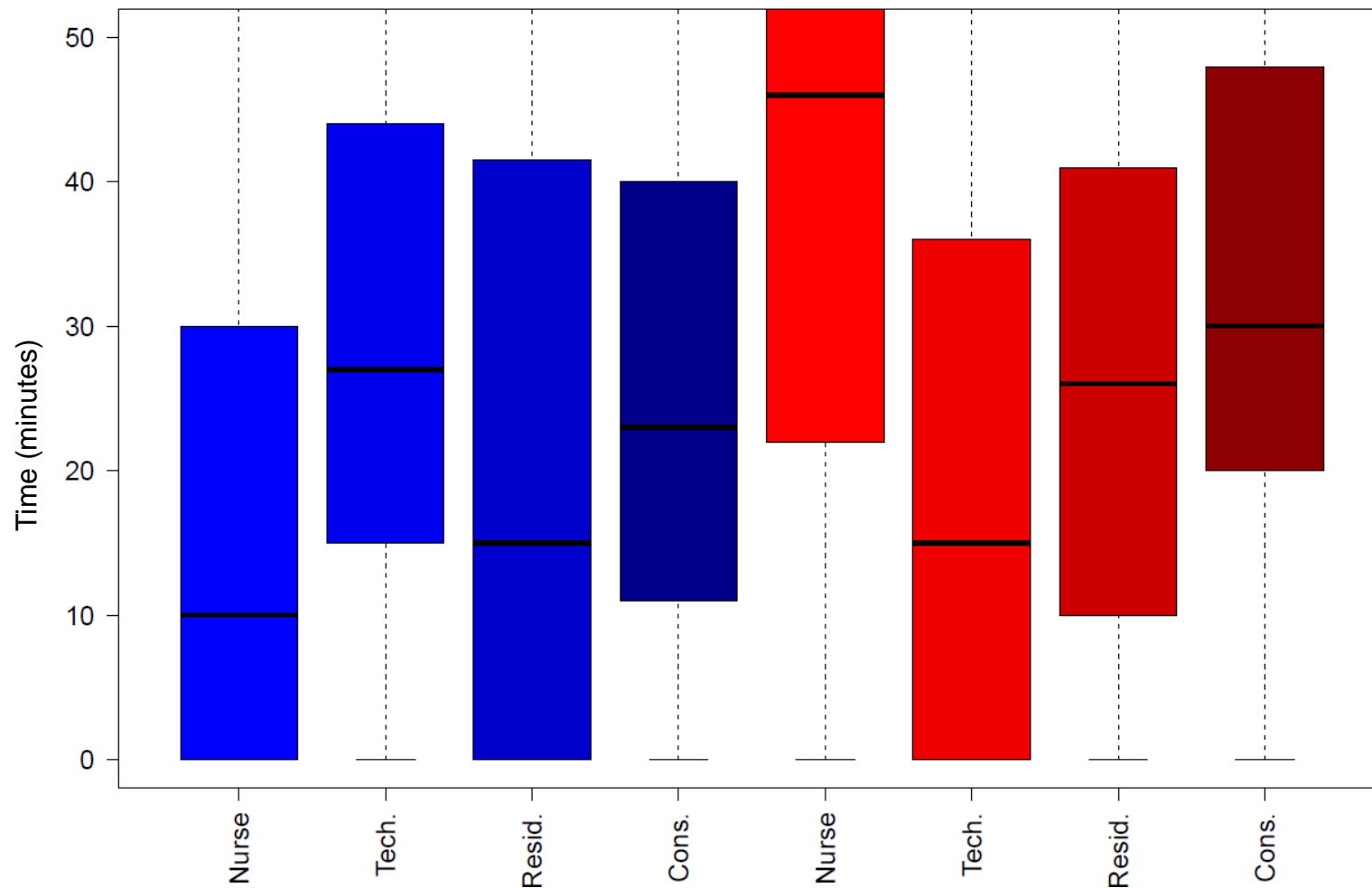
- | Timeframe 2014-12/2015
- | 25 clinical sites
 - » 60 patients per site
 - » each 30 in ICA and CTA arm
- | Contains Micro-Costing Approach
 - » Staff involvement time
 - » Consumption of materials

Staff Involvement Time, Pooled



Staff Involvement Time, Pooled

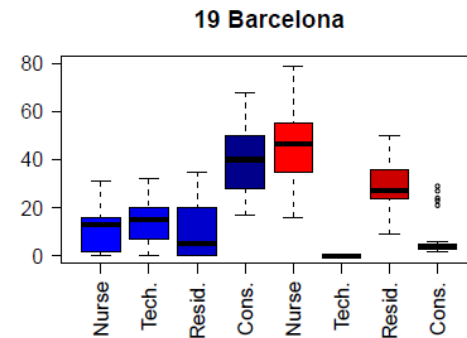
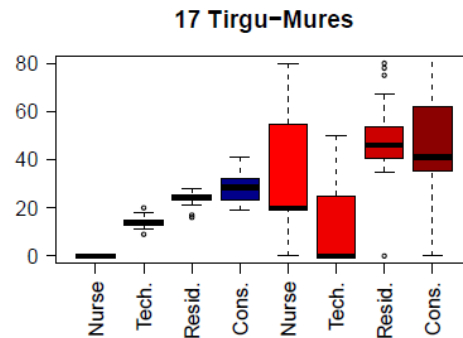
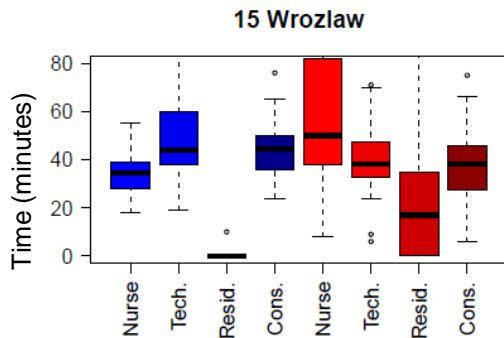
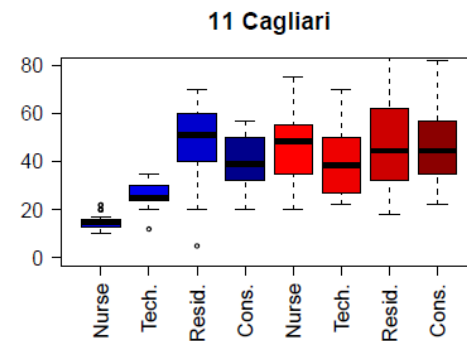
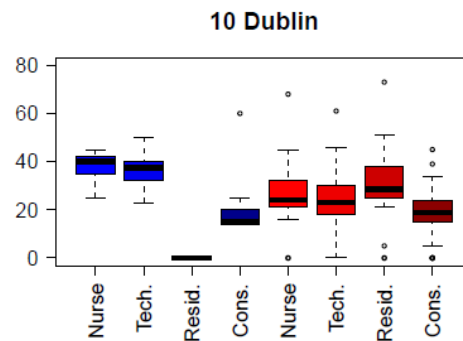
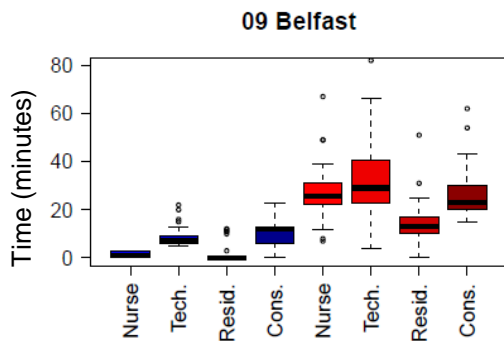
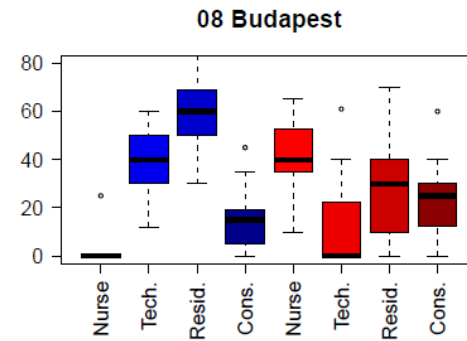
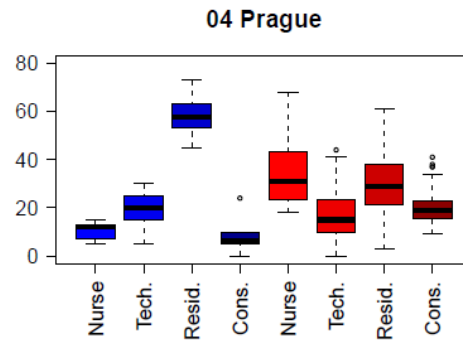
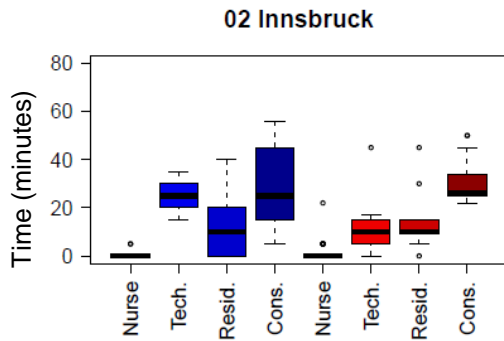
Pooled



Blue: CTA
Red: ICA
Tech.: Technician
Resid.: Resident
Cons.: Consultant

Censored at 50min

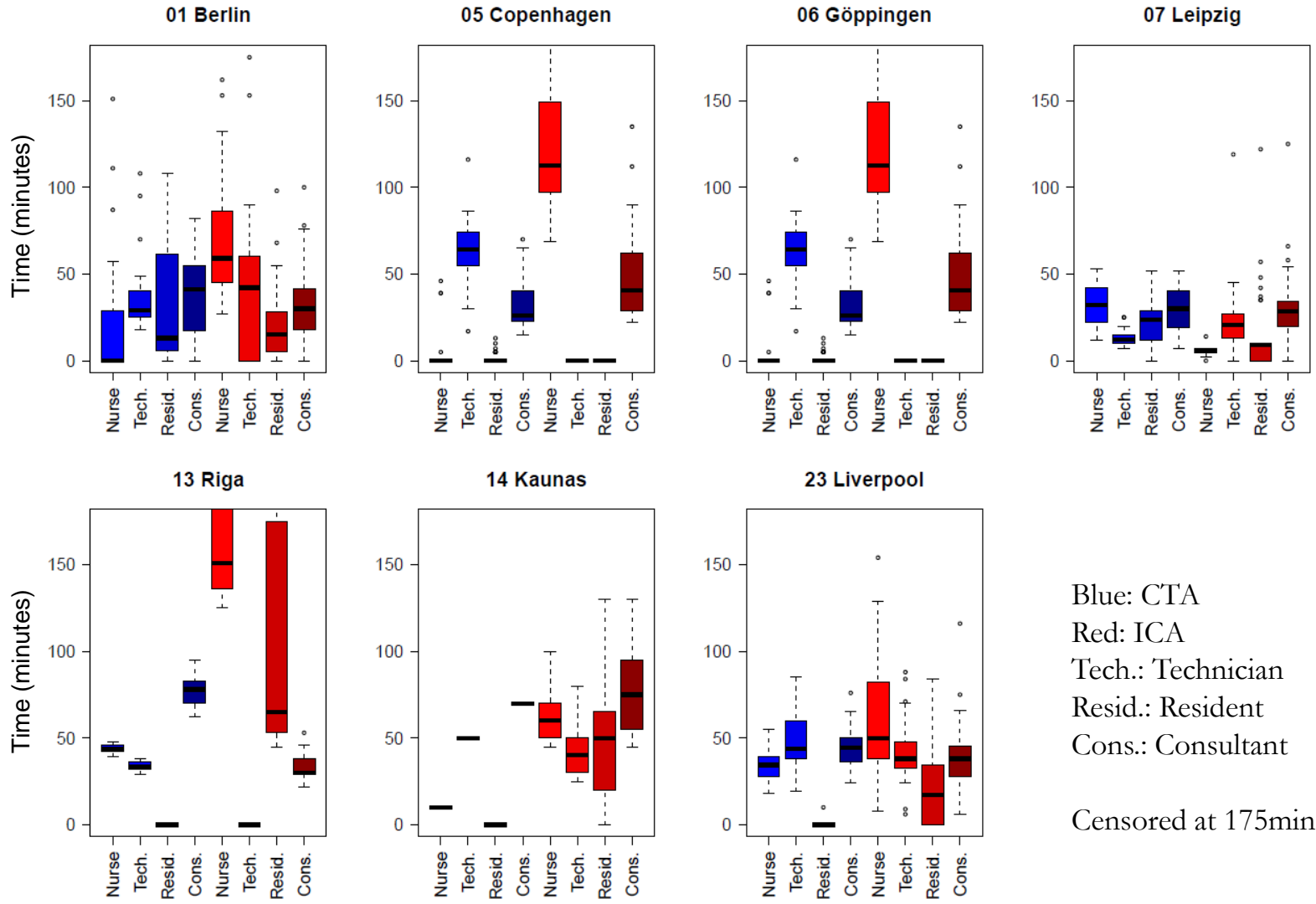
Staff Involvement Time, by Site I



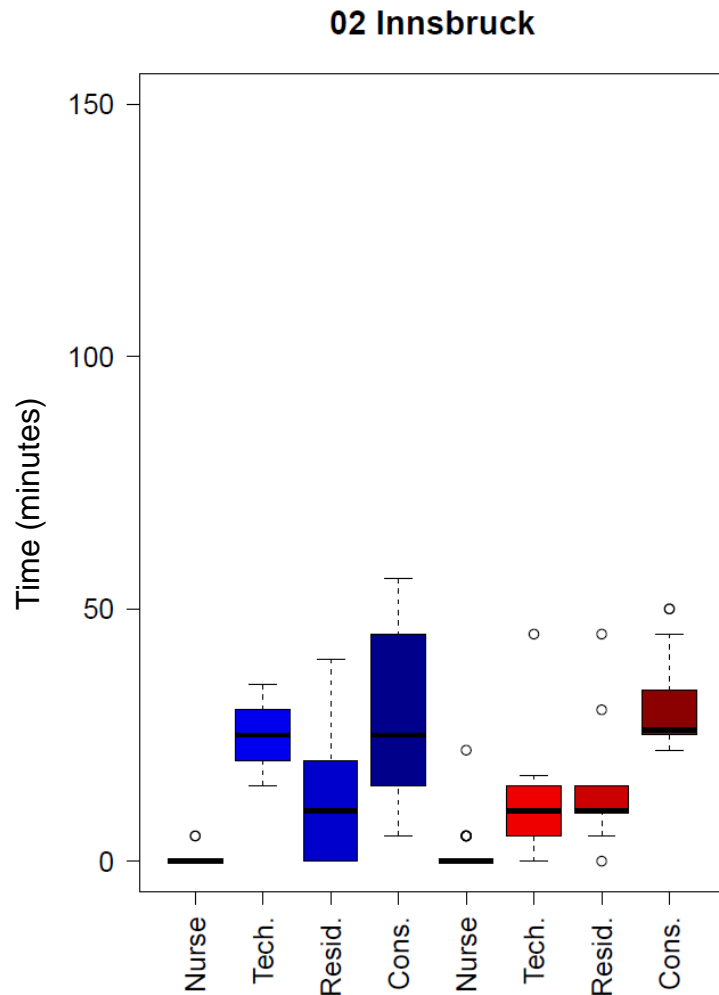
Blue: CTA
 Red: ICA
 Tech.: Technician
 Resid.: Resident
 Cons.: Consultant

Censored at 80min

Staff Involvement Time, by Site II

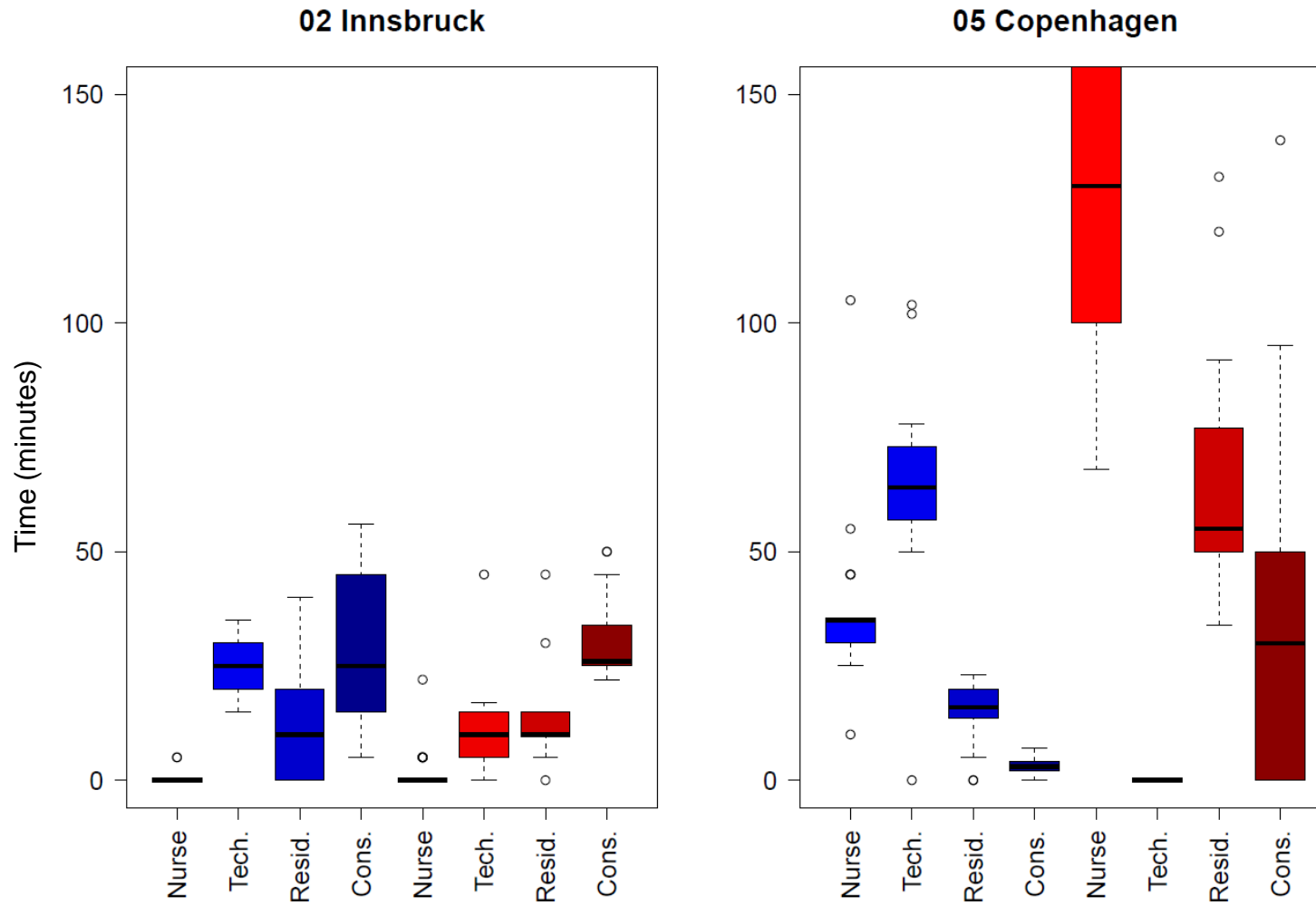


Differences in Median



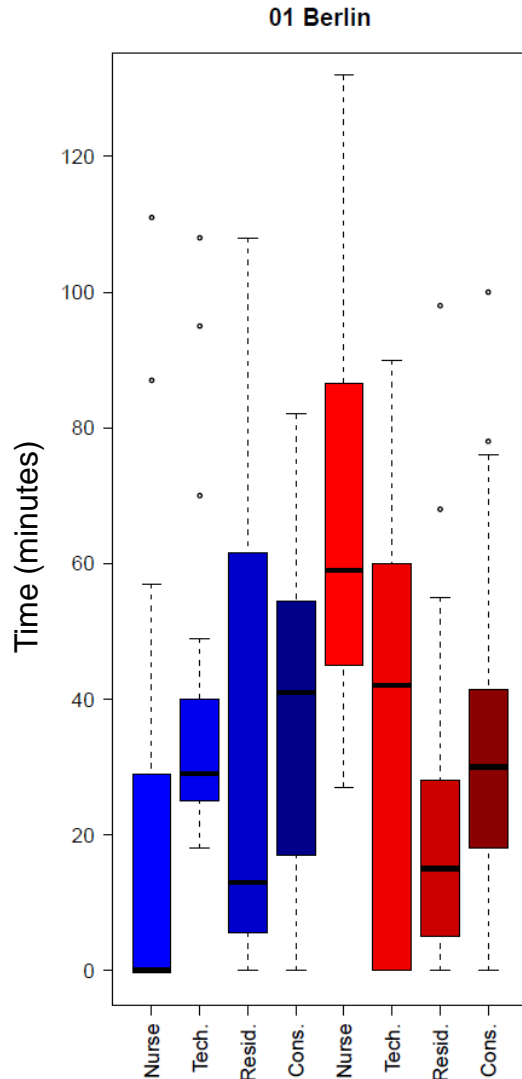
Censored at 150 min to improve visibility

Differences in Median

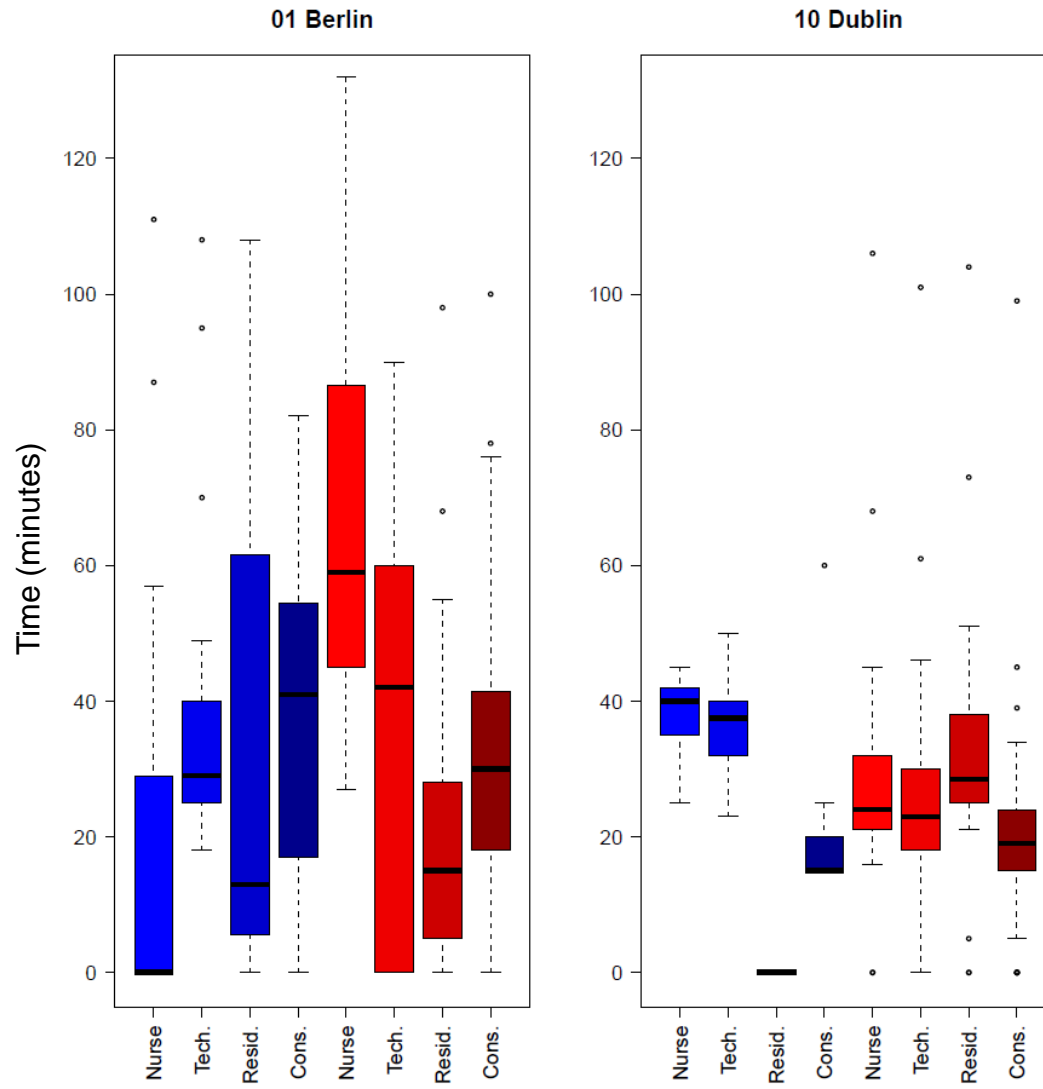


Censored at 150 min to improve visibility

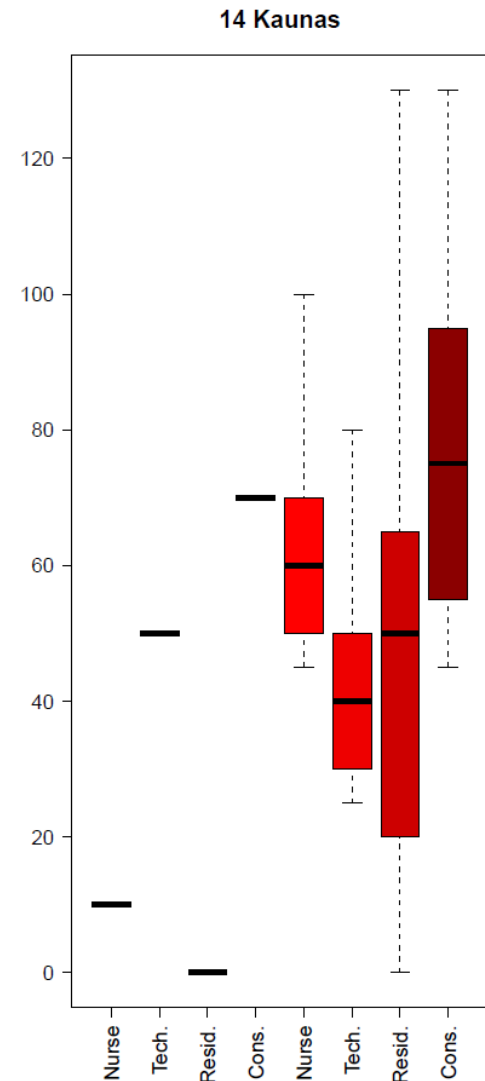
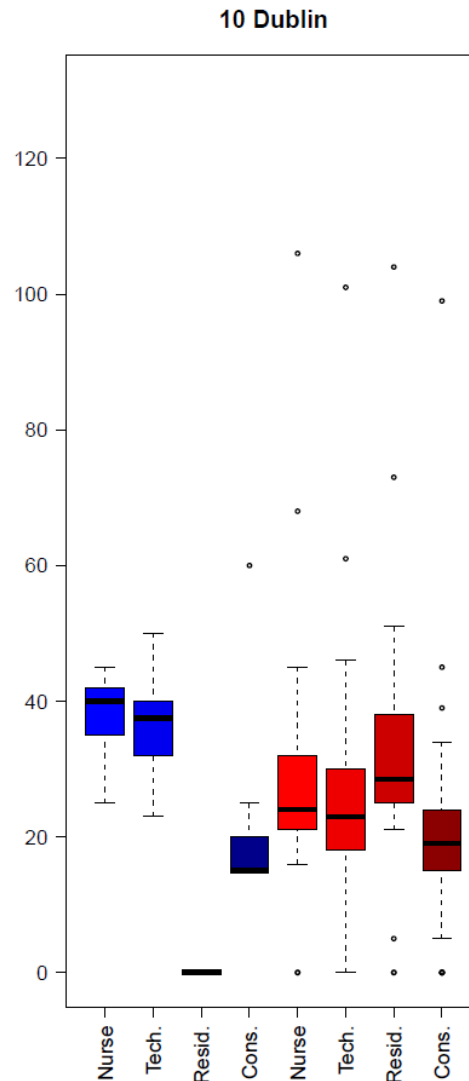
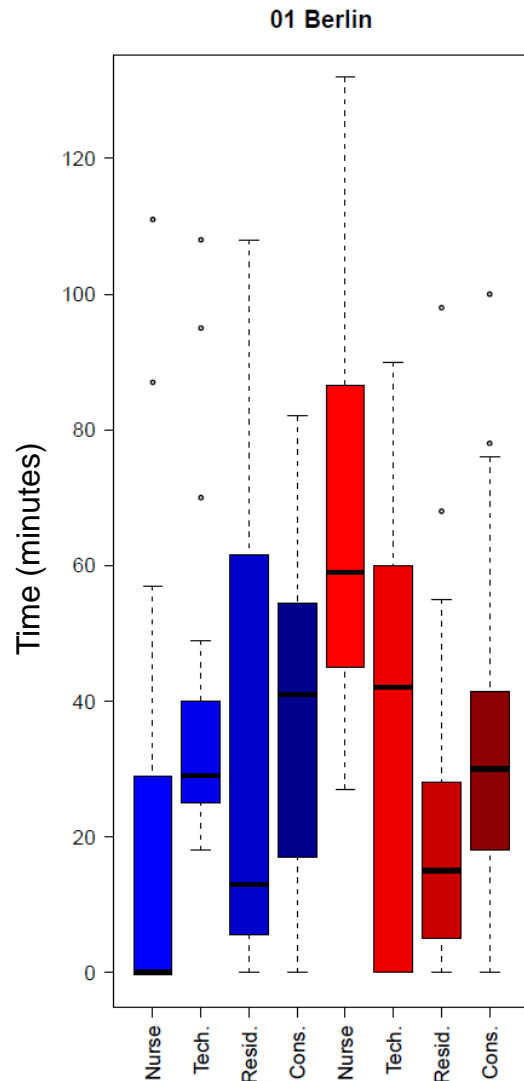
Differences in Range



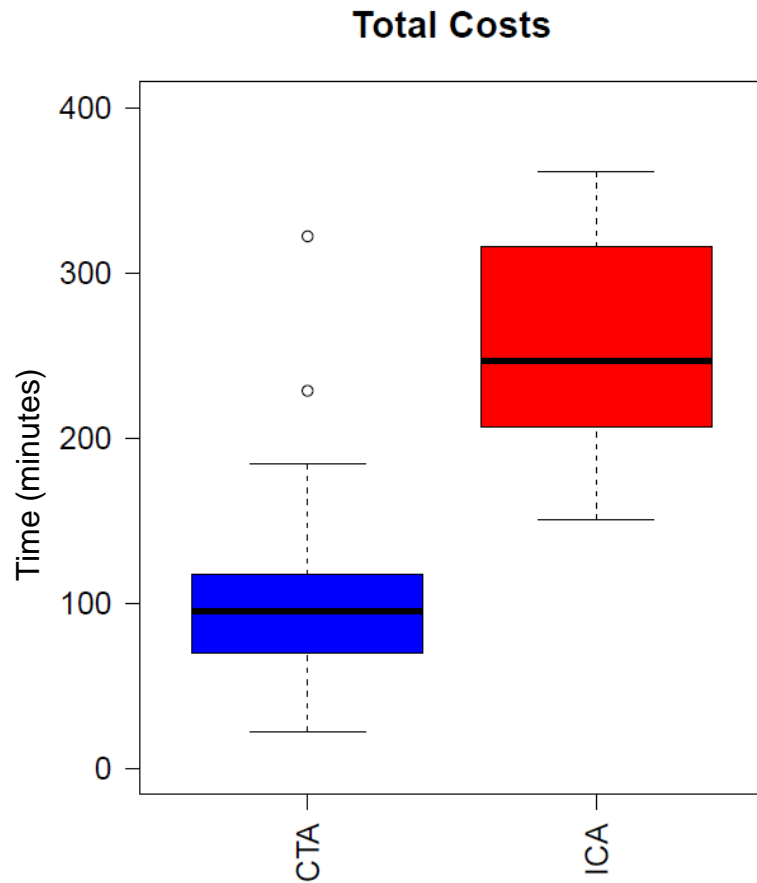
Differences in Range



Differences in Range

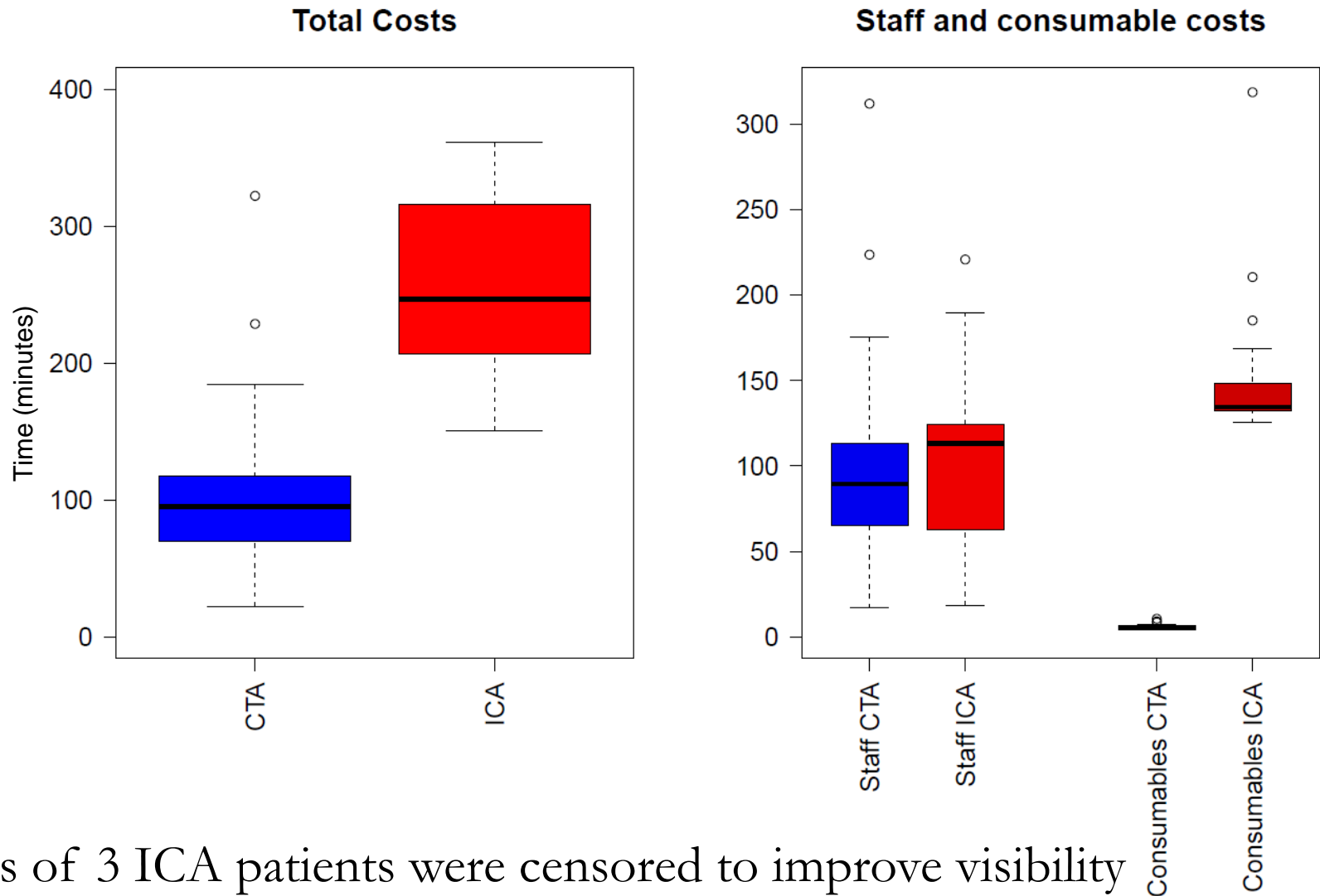


Costs at Charité I



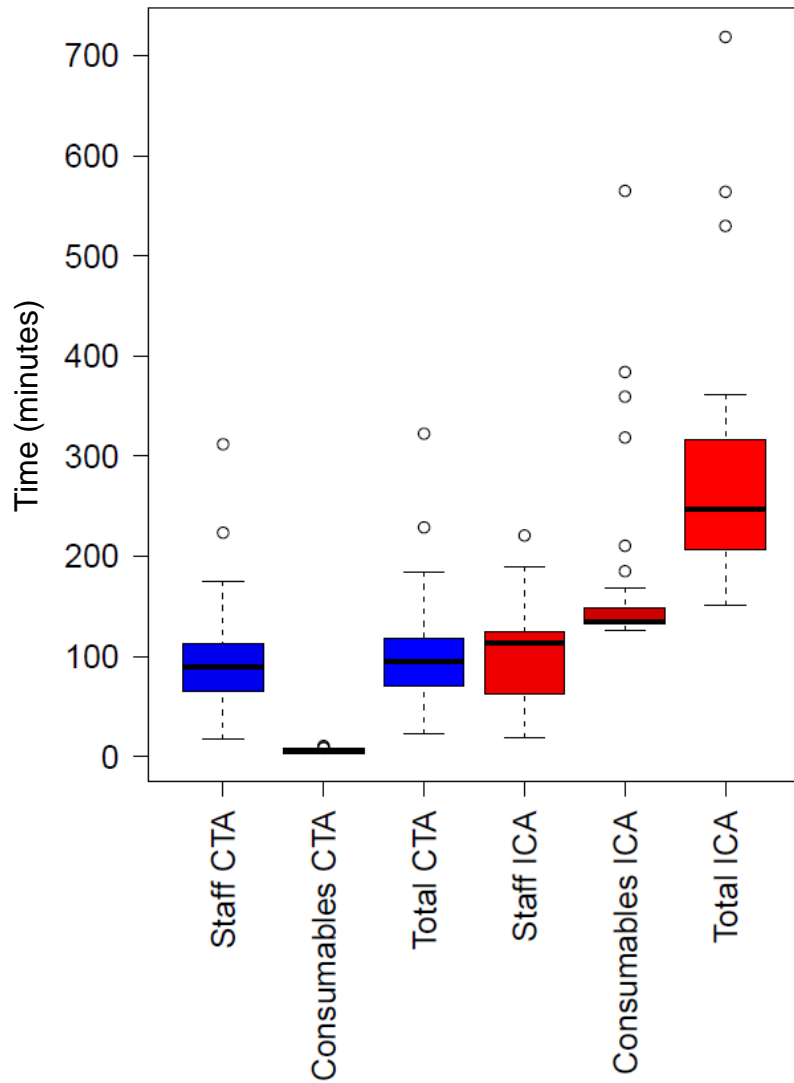
Costs of 3 ICA patients were censored to improve visibility

Costs at Charité I

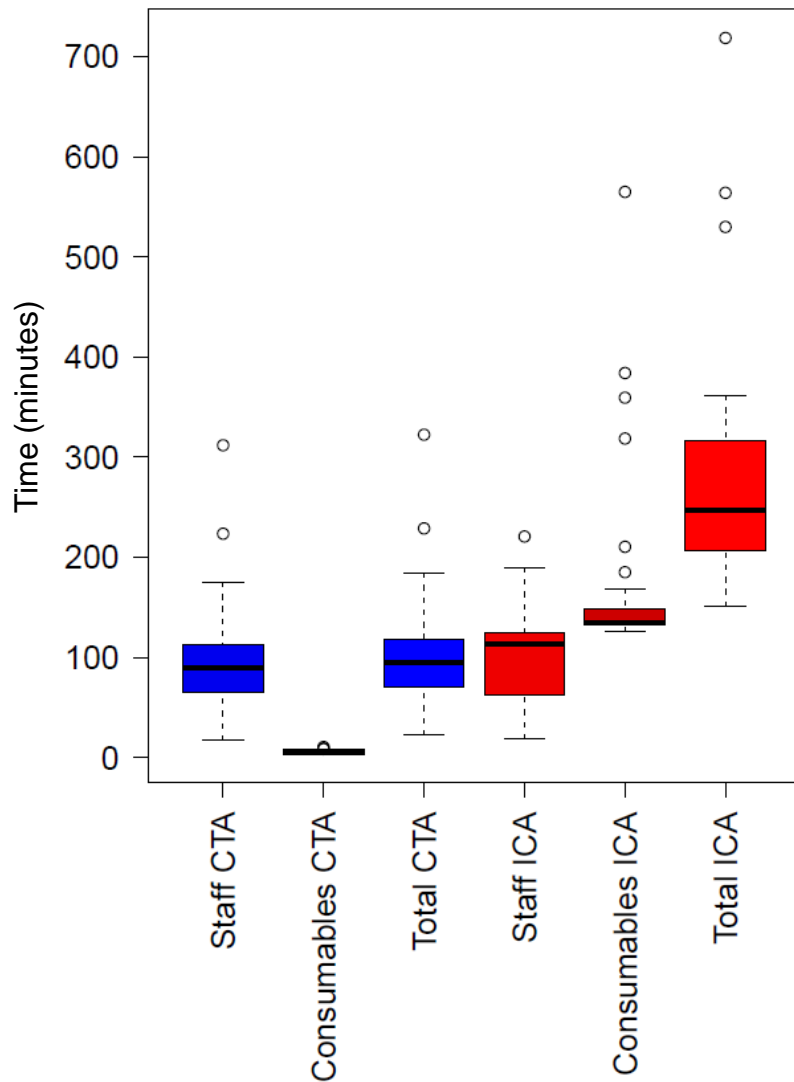


Costs of 3 ICA patients were censored to improve visibility

Costs at Charité II



Costs at Charité II



	Min	Median	Max
<u>Staff</u>			
CTA	17.01 €	89.42 €	311.80 €
ICA	18.30 €	113.20 €	220.70 €
<u>Consumables</u>			
CTA	3.96 €	5.28 €	10.55 €
ICA	125.50 €	134.40 €	564.80 €
<u>Total</u>			
CTA	22.29 €	95.14 €	322.40 €
ICA	150.70 €	247.00 €	718.60 €

Pilot Study Questionnaire I

- | General Hospital Information
- | Costs for Staff involvement
- | Costs for Consumables
- | Costs for Treatments of AE

Pilot Study Questionnaire II

Pilot Study
Questionnaire will
be sent to you next
week

Please state purchase costs of consumables, your hospital has to bear

	Classification / Substance	Manufacturer / Product Name	Volume per Unit	Net purchase costs	Price per
ICA Contrast Agent	Iopromide	Ultravist 370	200/200/500 ml	0.09 €	1ml
CTA Contrast Agent	Iopromide	Ultravist 370	200/200/500 ml	0.09 €	1ml
oral beta blocker	Metoprolol	1A Pharma	50mg	0.02 €	1 tablet / 50mg
Alternative to beta blocker 1	Ivabradine	PROCORALAN 7,5 mg Filmtabletten	7,5mg	0.94 €	1 tablet / 7,5mg
Alternative to beta blocker 2	Calcium Channel blocker	Verapamil	2* 120mg	0.07 €	1 tablet / 120mg
i.v. beta blocker	Esmolol		100mg/10ml	6.31 €	100ml bottle
Nitro	Nitrolingual akut Spray 0,4 mg/Hub 1St		2 x 1Hub / 0,4mg	1.16 €	1 Hub / 4mg
	Arterial puncture set	Angiographic kit	Vascular closure kit	Compression bandages	Balloon catheters with inflator
Type	Kath.Leader Set Safety #115.805	Coro-Set HKL-CCM 5660002	Jude Medical: VerschlussSystem Anglo Seal 6F 6I0120	Temuro: TR Band Kompressionsband #XX-RF06	
Internal Reference	115.805	530873	Angio Seal	TR Band	
Net Purchase Costs	14.93 €	36.42 €	66.63 €	9.12 €	36.03 €
Set Items (what is included in the costs?) Please describe, what is included	<ul style="list-style-type: none"> - Needle Holder 15cm - Leader-Cath G20 0.6 x 0.9mm L8cm - Perforated cloth 45x75cm - Safety scalpel green - Safety- cannula G25 16mm - Suture bent Supolene 45cm 2/0 - Syringe 2.5 ml Luer - Gauze compresses 10x10 - Transparent Association 7x8,5 cm - Filterhalm 9.5cm LL - Syringe 5ml Luer - Tray 170x98x35 mm 	<ul style="list-style-type: none"> Summary: Coro Set HVAC CCM 5660002 Specific criteria (long): Set components - 1 guide wire J3 FC-FS 150-035 - 1 disposable syringe Omnifix 20ml, LL - 2 disposable syringe Omnifix 10ml, LL - 1 disposable syringe red, 10ml, LL - 1 green disposable syringe, 10ml, LL - 1 disposable syringe yellow, 10ml, LL - 1 Safety Scalpel 			

General Hospital Information Costs for Staff Involvement **Costs for Consumables** Costs for Treatment of CAD Contacts

Please send back until Easter



Farewell

Bye